

# Grove Quilt

Designed by Lynne Goldsworthy of [lilysquilts.blogspot.com](http://lilysquilts.blogspot.com)  
68" x 68" (1.7m x 1.7m)



# Grove Quilt

Designed by Lynne Goldsworthy of [lilysquilts.blogspot.com](http://lilysquilts.blogspot.com)  
68" x 68" (1.7m x 1.7m)

SKU	Description	Amount	Cut
1525X	Linea	50cm / ½ yard	Seven 2 ½" WOF strips (binding)
2159S7	Scenic	4m / 4 ¼ yds	Two equal lengths (backing)
2161B	Meadow	FQ	Five 4 ¾" squares
2162B8	Tonal	35cm/15"	One 2" and seven 1 ½" WOF strips each cut into two equal lengths
2162S1	Tonal	30cm/12"	Seven 1 ½" WOF strips cut into two equal lengths
2162S9	Tonal	1 m / 1 ¼ yds	See cutting instructions
2163S	Rabbits	F8th	Three 2" WOFQ strips
2164Q	Swallows	30cm /12"	Five 2" WOF strips each cut into two equal lengths
2165B	Storm	30cm/12"	Seven 1 ½" WOF strips cut into two equal lengths
2165Y	Storm	FQ	Five 2" WOFQ strips Five 3" squares
2166 1	Border	2 m / 2 ¼ yds	See cutting instructions
2167 1	Panel	One panel	See cutting instructions
	Wadding	1.9m <sup>2</sup> / 76" square	279 Cotton Mix 80-20 from <a href="http://www.vlieseline.com/en">http://www.vlieseline.com/en</a>
	Threads		Aurifil 50wt for piecing and 40wt for quilting from <a href="http://www.aurifil.com">http://www.aurifil.com</a>
	Templates		Five HST templates One Small Wedge Template and one Large Wedge Template One A Circle Template Two B Circle Templates Four C Circle Templates
	Fusible Web 18" / 45cm wide	3 m / 3 yds	Bondaweb from <a href="http://www.vlieseline.com/en">http://www.vlieseline.com/en</a>

## Notes:

- **Make sure to visit <http://www.makoweruk.com/projects/> to ensure you are working from the most up-to-date version of the pattern.**
- Read the pattern in full before starting.
- ¼" seams are used throughout except where stated otherwise.
- Press after each seam, pressing seams open or to one side as preferred.
- WOF - width of fabric - a strip of fabric cut from selvedge to selvedge.
- WOFQ – width of fat quarter – a strip of fabric cut from selvedge to centre cut from either a FQ or a F8th
- LOF – length of fabric, a strip of fabric cut parallel to the selvages.

## Cutting the fabrics

1. Cut the black Tonal fabric into:

- Two 15 ½" WOF strips each cut into two 15 ½" squares.
- Cut an 11" square from the remainder of one of the strips.
- Use the remainder of the other strip for any ¾" x 11" strips needed at step 2 below.
- Four ¾" WOF strips. Trim two to 38" and two to 38 ½" long
- Cut one additional ¾" WOF strip and cut into 11" lengths if more are needed than were cut from the remainder of the 15 ½" WOF strip.

2. Cut the panel into eight sections cutting between the squares (see fig 1).

Trim each one to 11" wide. If these eight sections are shorter than 11" tall, add a ¾" x 11" strip of background fabric (black Tonal) to either the top or the bottom or both as needed then trim to 11" tall.

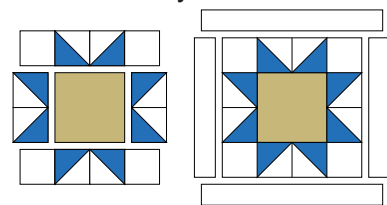


fig 1

3. Cut the border fabric into four 15 1/2" x 38 1/2" strips, cutting along the edge of the fabric to create the four border pieces you see in the main quilt image. Cut the remainder (the centre strip which should now measure 11" x 78") into the following:
  - One 11" x 12" rectangle from the end of the strip. Cut into ten 1" x 12" strips and cut each of those into one 5 1/2" and one 6 1/2" length.  
From the remainder, cut:
  - One 4 3/4" LOF strip cut into five 4 3/4" squares. Cut the remainder of that strip into three 1 1/2" LOF strips and cut each of those into two equal lengths.
  - One 1 3/4" LOF strip. From this strip cut twenty 1 3/4" squares. Trim the remainder of the strip to 1 1/2" wide and 21" long.
  - Two 1 1/2" LOF strips and cut three 21" lengths from each.
4. Cut the remainder of the fabrics as set out in the fabric requirements table.

### Making the quilt top

1. To make the stars at the centre of the four large and one small circle, you will need to make five sets of eight HSTs using the HST templates and the 4 3/4" squares of Border and Meadow fabrics. The fabric squares are 1/2" bigger than the templates so that they overhang the paper by 1/4" all around the dashed line – this is to make it easier to line up the fabrics to the paper template.
2. Pin one Border fabric and one Meadow fabric 4 3/4" square to the back of one of the HST templates with the fabrics right sides together and the Border fabric next to the paper.
3. Shorten your machine stitch to 1.5 and sew along all of the red lines. Cut the template and fabric along all the blue lines using a rotary cutter. Trim off the corners on each triangle along the green lines. Press each HST unit open and remove paper from the back. Repeat for the remaining sets of HST units. At this stage each HST will measure 1 3/4" square (1 1/4" square once pieced into the quilt top).
4. Sew the HST units into pairs and sew 1 3/4" Border fabric squares onto each end of ten of those pairs (fig 2). Sew the shorter HST strips to the side then the longer to the top and bottom of the 3" yellow Storm fabric squares (fig 2).



5. Sash the sides of this piece with the 1" x 5 1/2" then the top and bottom with the 1" x 6 1/2" Border fabric strips (figs 3 and 4).
6. Trace five A Circle Templates onto fusible web, cutting out at the dashed line. Fuse to the back of the five star blocks, aligning the dashed line with the edges of the fabrics. Cut out the centre circle (solid line) and remove backing paper (figs 5 and 6).
7. Sew the 1 1/2" x 21" strips of Border, blue Storm, grey Tonal and blue Tonal fabrics into the following strip sets (see figs 7-10):

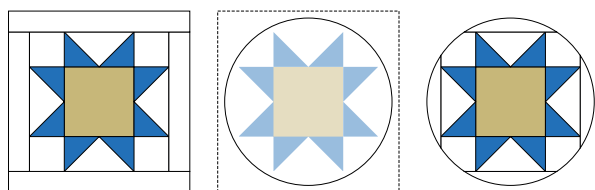


fig 2-6

- One set with one Border strip and one blue Tonal strip
- One set with one grey Tonal strip and one blue Storm strip
- Six sets with two Border strips and two blue Tonal strips
- Six sets with two grey Tonal strips and two blue Storm strips

8. Cut the sets with two strips into eight small wedges per set using the small wedge template as a guide. Cut the sets with four strips into six large wedges per set using the large wedge template as a guide. **NB: do not rotate the wedge template as you cut the wedges and make sure to follow the colour placement and the direction of the templates in figs 7-10.**

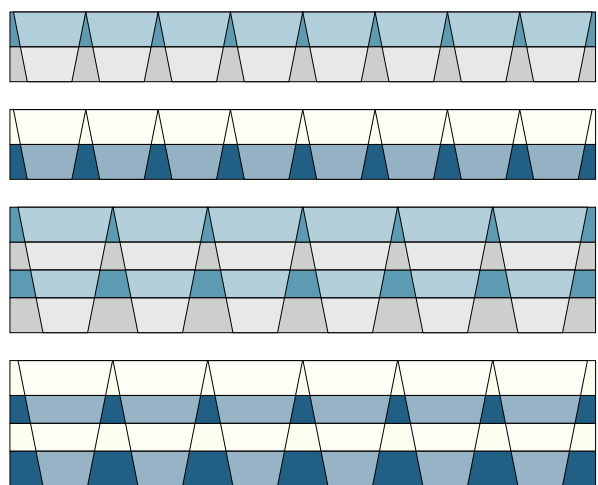


fig 7-10

9. Sew the wedges into one small circle and four large circles alternating colours as you go (see main quilt image). Press all the seams in one direction.
10. Tape two B Circle Templates together to make one large circle and trace onto the fusible web. Cut the paper along the inside solid circle line and the outside dashed line. Fuse to the back of the small wedge circle aligning the dashed outer line with the edges of the fabric. Trim to the solid outer line and remove paper from the back.

- Repeat the same process taping together four C Circle Templates, tracing onto fusible web (four times), cutting out, fusing to the back of the large wedge circles, trimming to the solid outer line and removing paper from the back.
- Fold the black Tonal 11" square and 15 1/2" squares in half and finger press the fold. Repeat in the other direction to create guidelines running through the centre of the squares to align the wedge circles. Lay the small wedge circle onto the centre of the 11" square and the large wedge circles onto the centres of the 15 1/2" squares and fuse in place. Lay the circle star blocks on top of the wedge circles, again taking care to centre them and fuse in place. Stitch all round the wedge circles and the circle star blocks to secure using a straight blanket, zigzag or other decorative stitch.

- Sew the 2" x 21" strips of Swallows, blue Tonal, black Rabbits and yellow Storm fabrics into the following strip sets (see figs 11-12):

- Two sets with four Swallows, one blue Tonal, one black Rabbits and two yellow Storm strips
- Cut the remaining 2" x 21" strips into two equal lengths and sew one set with four Swallows, one black Rabbits and two yellow Storm strips.

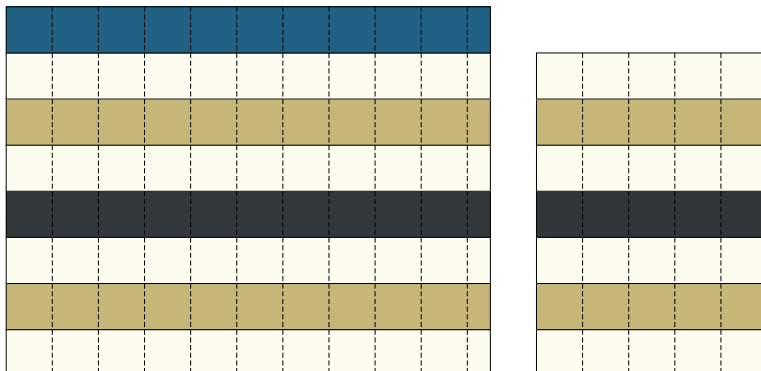


fig11-12

- Cut each strip set into 2" widths (figs 11-12).
- Sew twelve of the longer strips end to end into four sets of three. NB: See fig 13 for steps 15 to 21.

- Remove one blue Tonal square from the end of each of the remaining strips. Sew four of these to the ends of the strips made at step 15. Discard the remainder.



- Sew the 11" squares cut from the panel and the 11" wedge circle block into three rows of three with the shorter strips in between and at each end.

- Sew those three rows together with the longer strips in between and on the top and bottom.

- Sash the sides of this piece with the black Tonal 3/4" x 38" strips then the top and bottom with the 3/4" x 38 1/2" strips.

- Sew two border pieces to either side of this centre piece orientated as in the main quilt image.



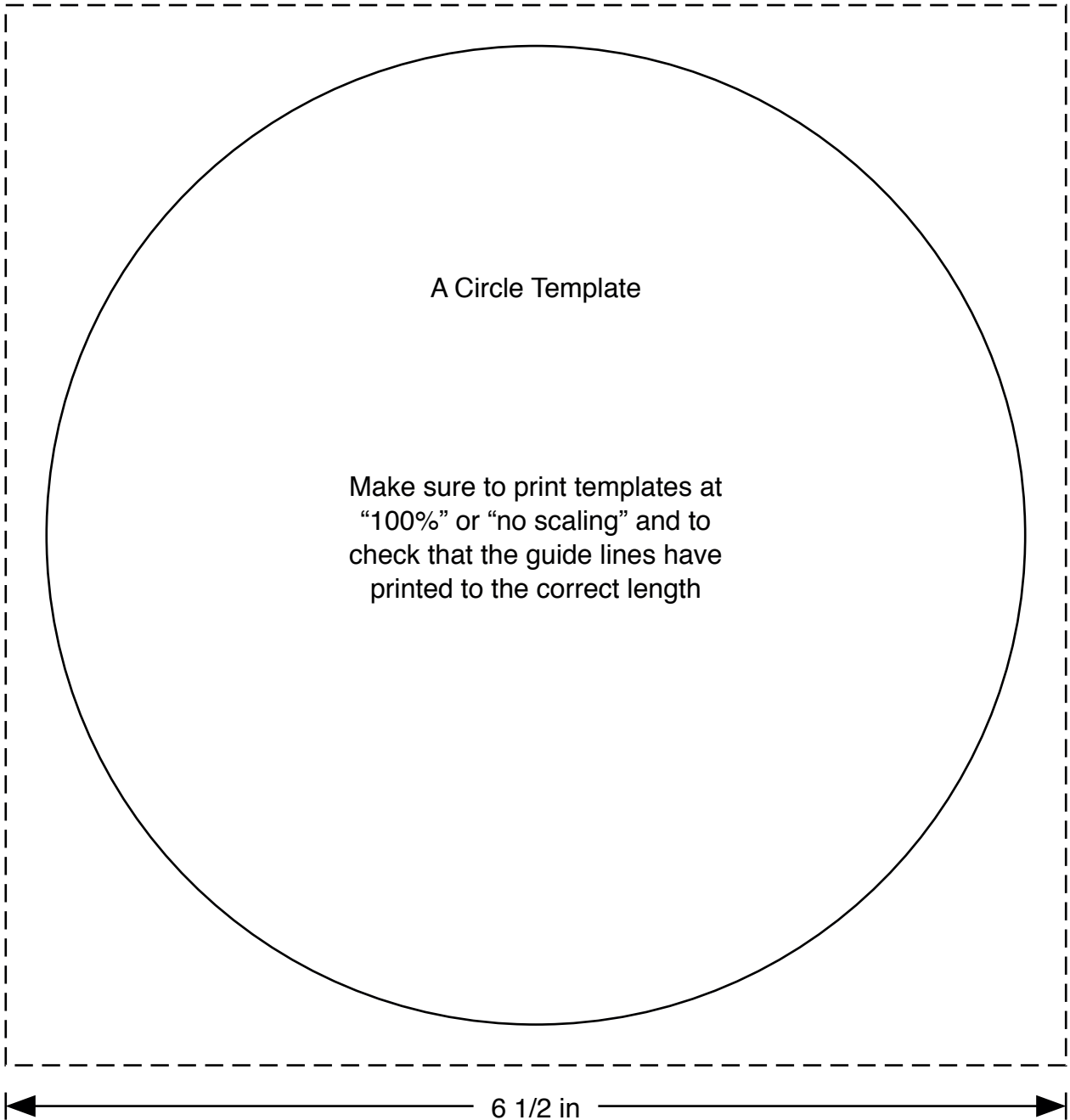
- Sew the large circle wedge blocks to each end of the two remaining border pieces and sew to the top and bottom of this centre piece.

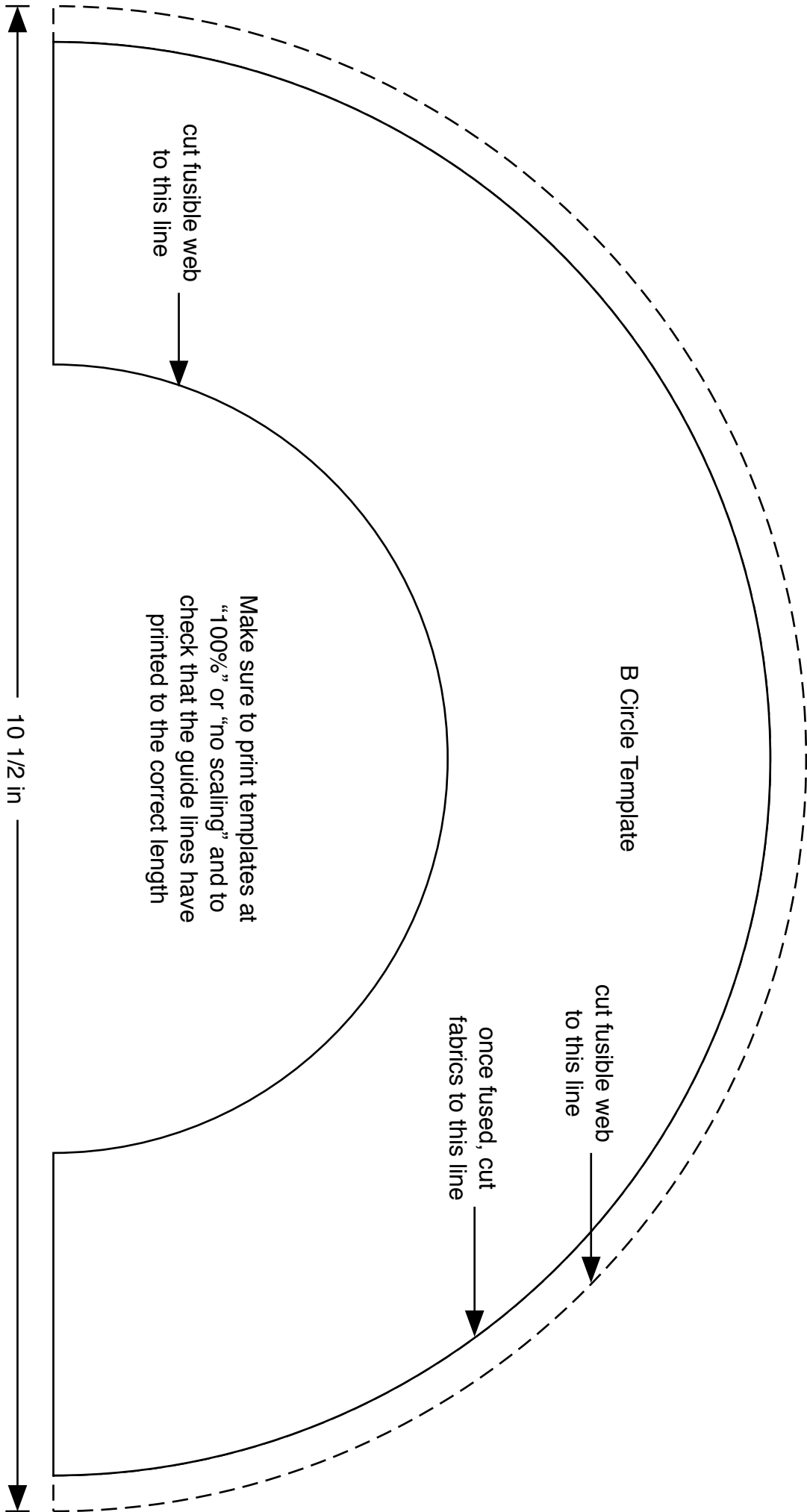


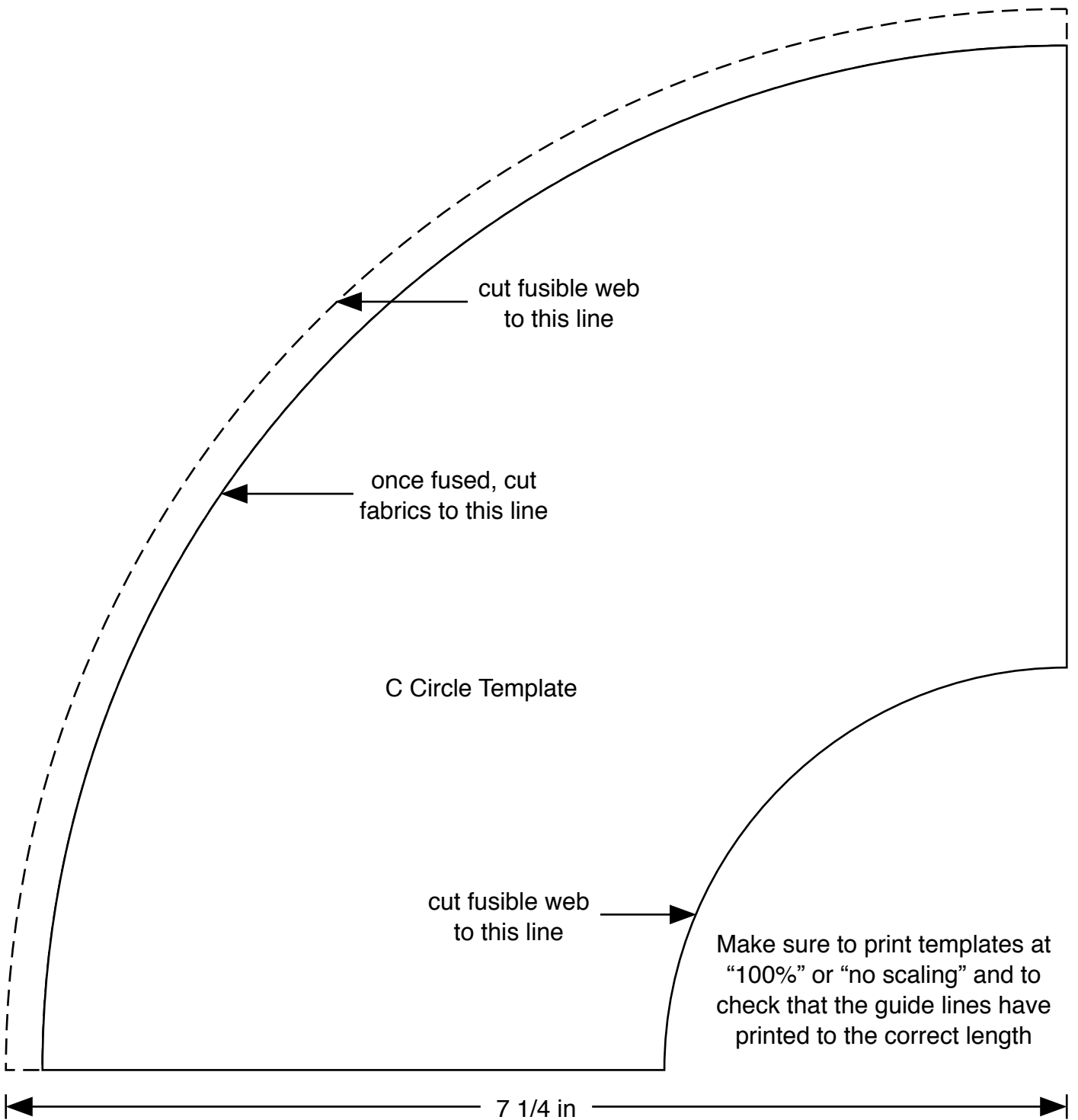
### Finishing the quilt

fig13

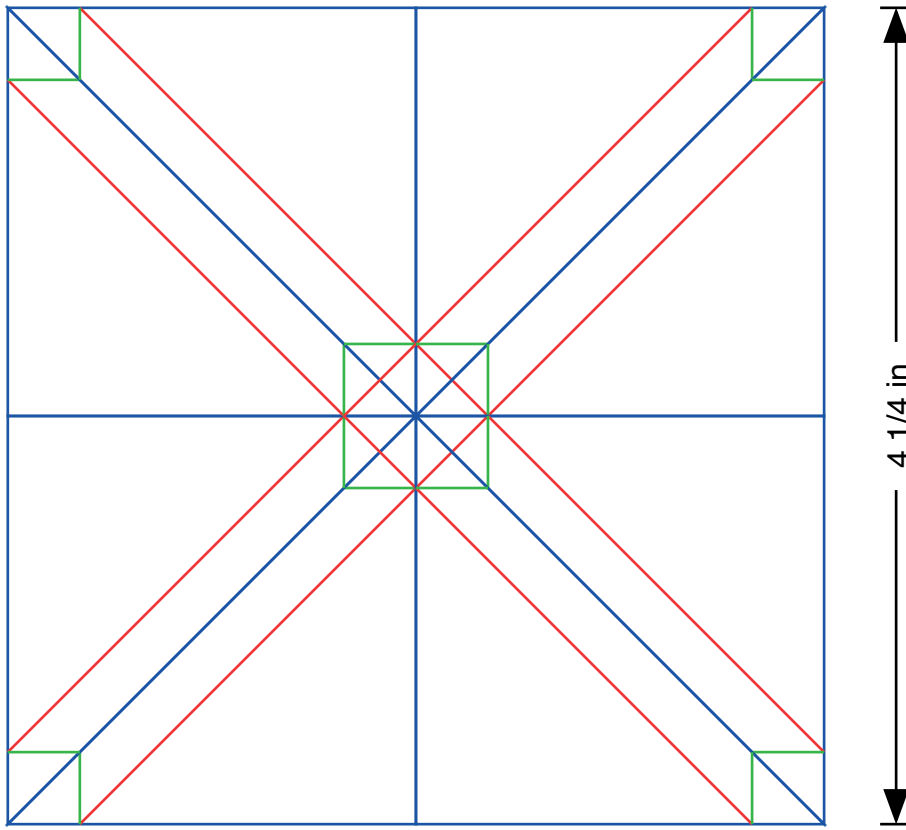
- Sew the binding strips end to end using diagonal or straight seams as preferred and press wrong sides together along the length to make a double fold binding.
- Make a quilt sandwich, basting together the quilt back, the wadding and the quilt top.
- Quilt as desired then trim the quilt square, removing excess wadding and backing. We quilted a diagonal cross hatch of lines approximately 2" apart using a cream 40wt Aurifil thread on the front and a grey 40wt Aurifil thread on the back.
- Bind the quilt taking care to mitre the corners.



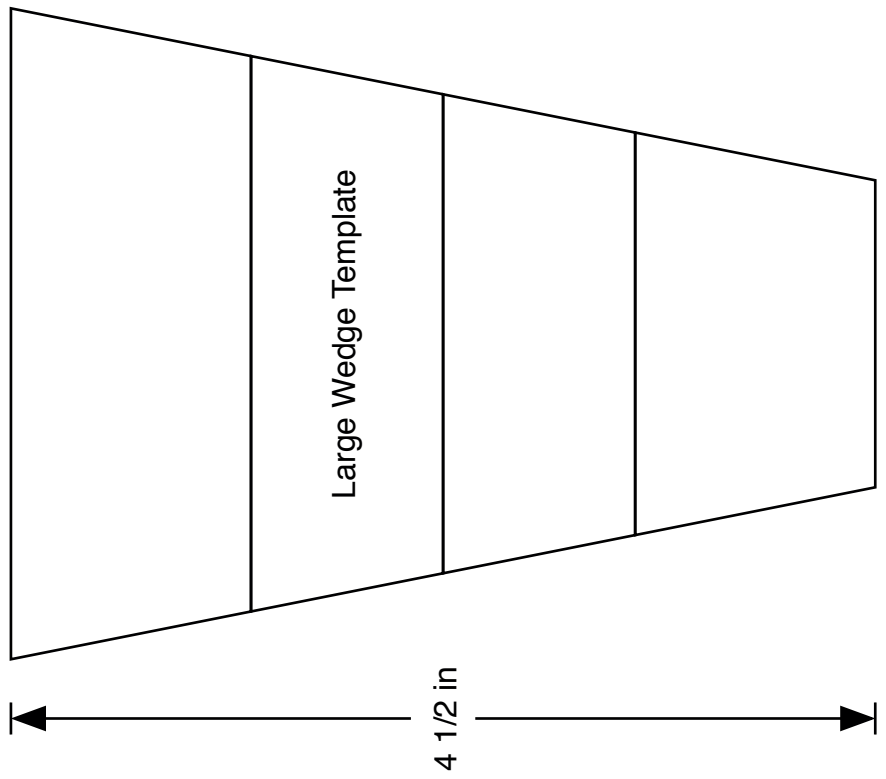
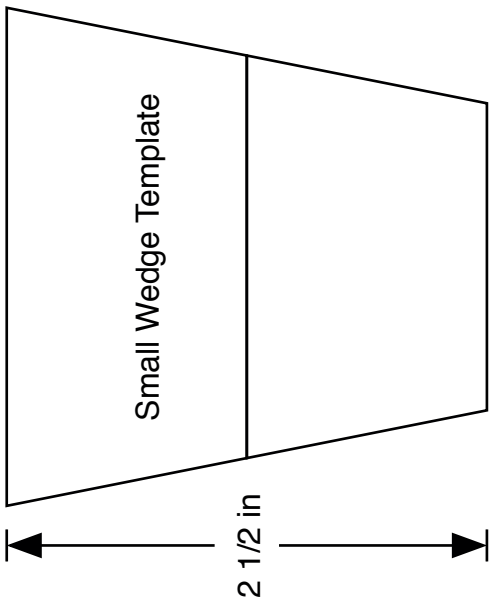




HST template



Make sure to print templates at "100%" or "no scaling" and to check that the guide lines have printed to the correct length







2159/S2 Scenic



2164/S Swallows



2161/S Meadow



2160/Q Chickens



2163/S Rabbits



2159/S7 Scenic



2159/B4 Scenic



2164/Q Swallows



2161/B Meadow



2160/B Chickens



2163/Q Rabbits



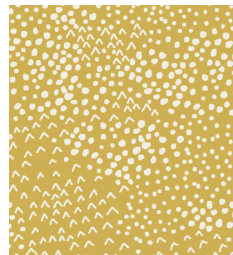
2159/B8 Scenic



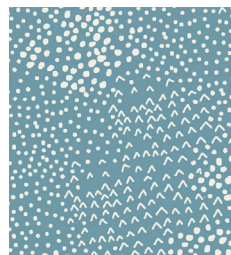
2162/S1 Tonal



2162/S9 Tonal



2165/Y Storm



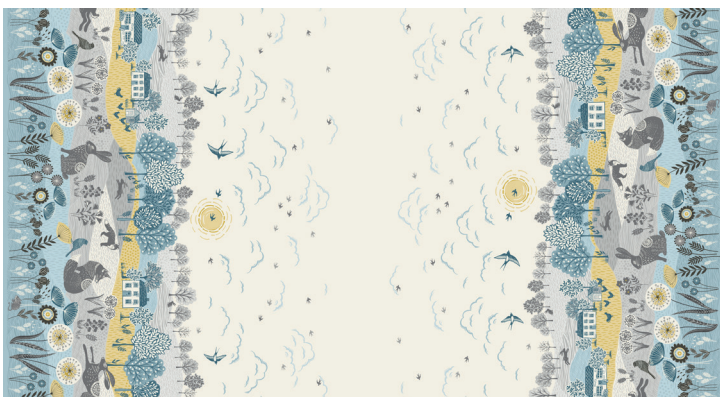
2165/B Storm



2162/B8 Tonal



2162/B2 Tonal



2166/1 Double Border

Piece shown 24" x 44" (60 x 112ms)



2167/1 Panel

Piece shown 24" x 44" (60 x 112ms)